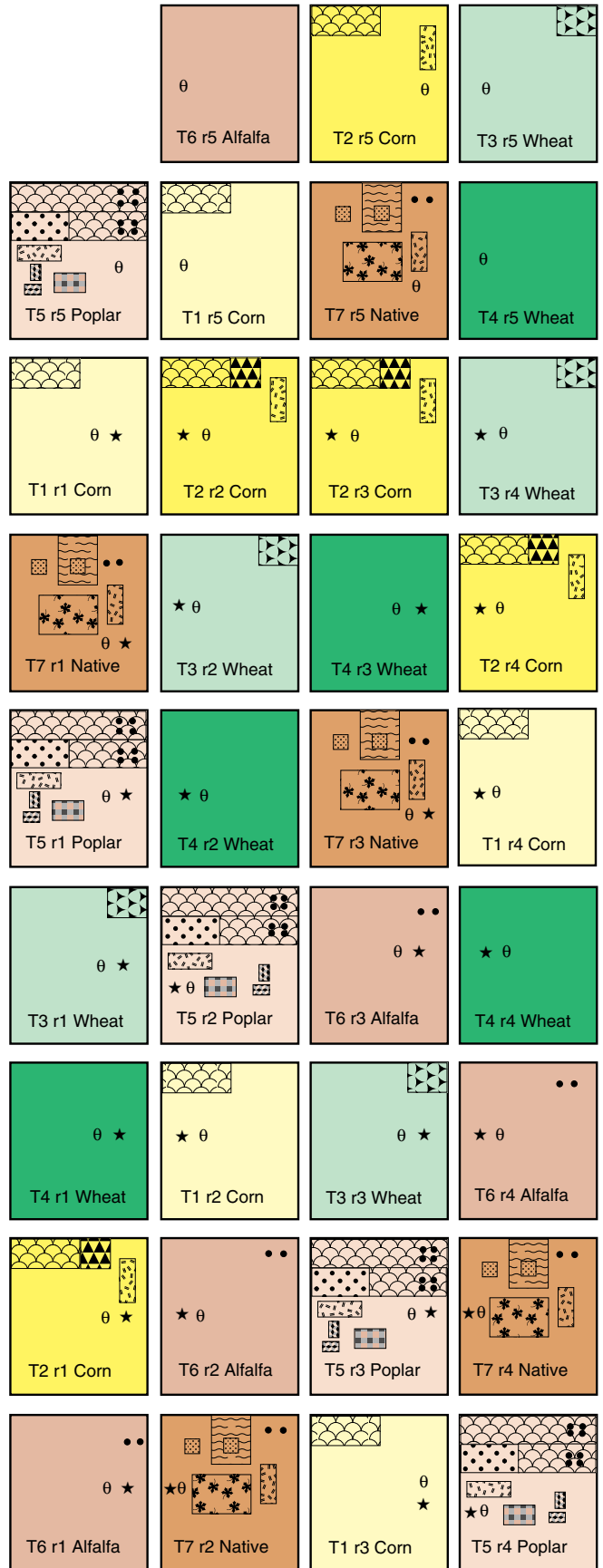
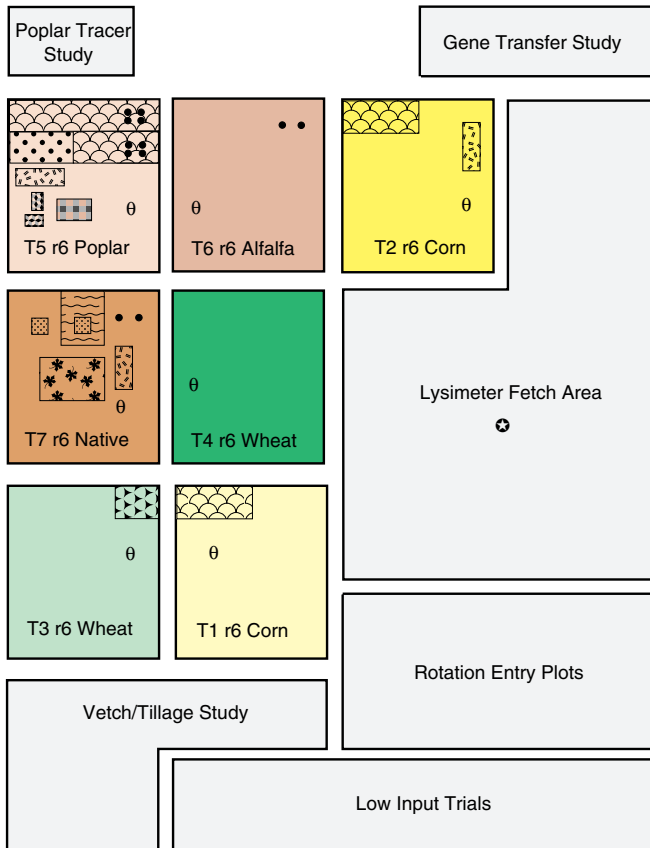
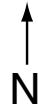


1989 LTER Main Site

Treatments

- T1 Std input **corn**/soybean conventional till
- T2 Std input **corn**/soybean no till
- T3 Low input **wheat**/corn/soybean with cover crop
- T4 Zero input **wheat**/corn/soybean with cover crop
- T5 Perennial biomass - *Populus* trees
- T6 Perennial biomass - Alfalfa
- T7 Successional community - Historically tilled
- T8 Successional community - Never tilled (off-site)

- Nitrogen fertilizer microplot (T7 only)
- Poplar allometry microplot (T5 only)
- Moldboard plow microplot (T7 only)
- Unmowed cover microplot (T3 only)
- Poplar - no fescue microplot (T5 only)
- Plant competition microplot (T1,T2,T5)
- Tree establishment study (T7 only)
- KBS decomposition study (T2, T7)
- Cross-site decomposition study (T2 only)
- Leaf Litter Traps
- Minirhizotrons
- Trace gas flux chambers
- TDR Rods
- Weather station & weighing lysimeter



T8r1 (18)
T8r3 (22)
T8r2 (19)
T8r4 (23)

(200 m off-site)