

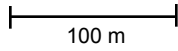
2002 KBS LTER Main Site

Treatments

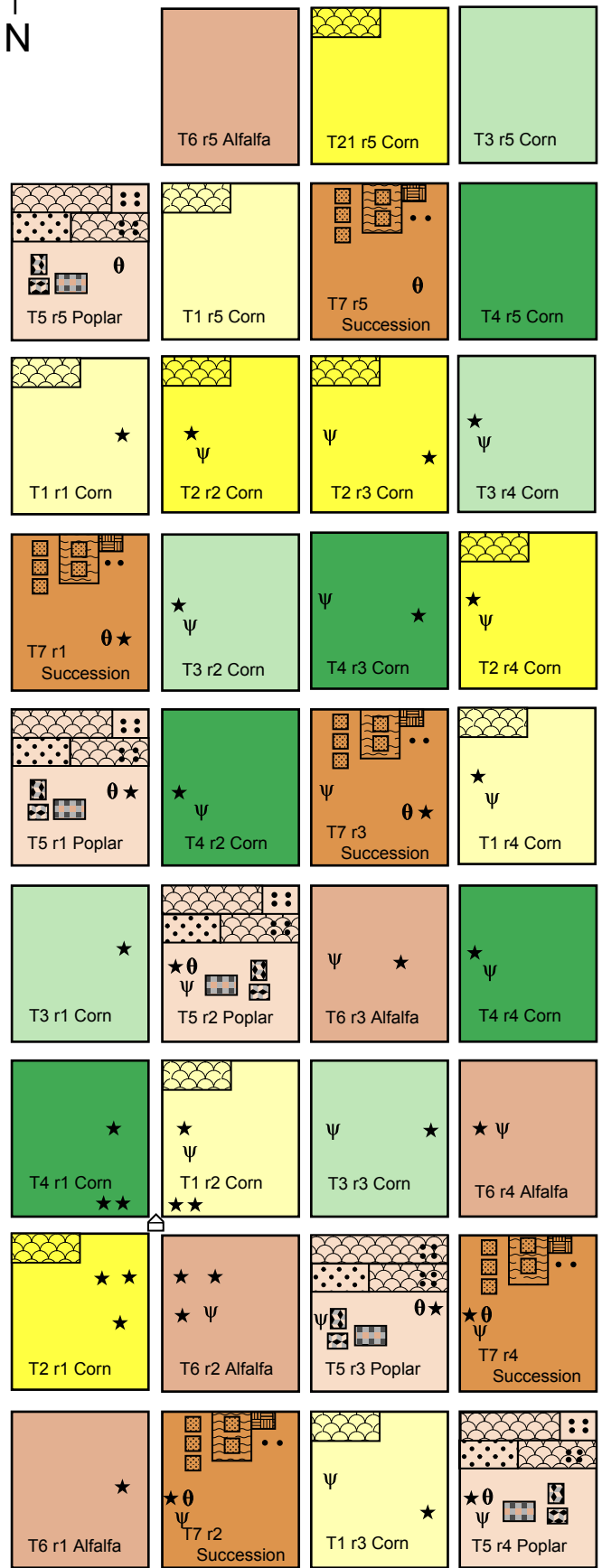
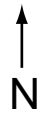
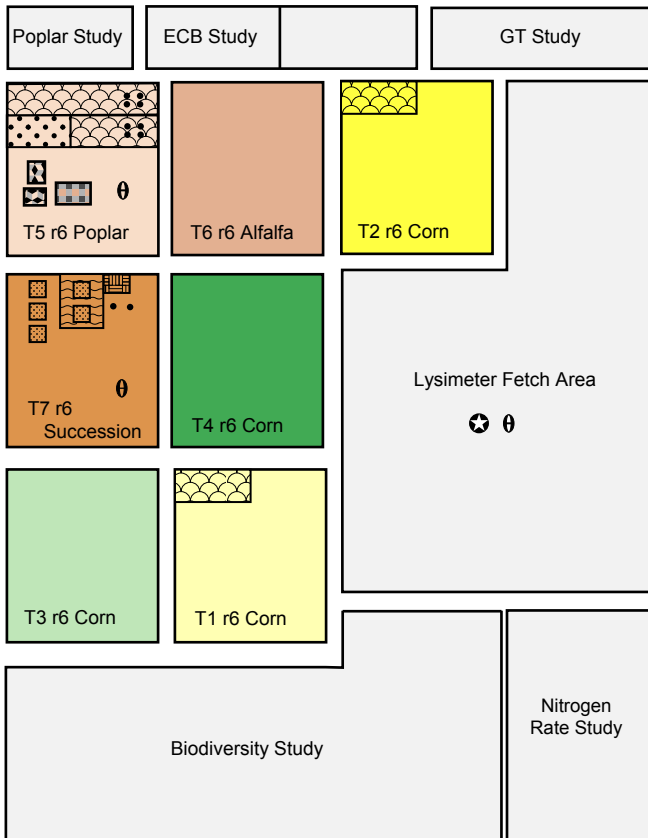
- T1 High input **corn**/soybean/wheat conventional till
- T2 High input **corn**/soybean/wheat no till
- T3 Low input **corn**/soybean/wheat with cover crop
- T4 Zero input **corn**/soybean/wheat with cover crop
- T5 Perennial biomass - Populus trees
- T6 Perennial biomass - Alfalfa
- T7 Successional community - Historically tilled
- T8 Successional community - Never tilled (off-site)
- T21 Same as T2 r5 but plowed 1994

- Nitrogen fertilizer microplot
- Poplar allometry microplot
- Tilled microplot
- Leaf Litter Traps
- 2m x 1m Poplar trees, no fescue cover
- Plant competition microplots (3 density x 2 herbicide)
- Nematode disturbance study

- Minirhizotrons
- ★ Trace gas flux chambers
- ⊖ TDR Rods
- ψ Low tension suction lysimeters
- ⊞ Weather station & weighing lysimeter
- ⊞ Trace gas shed



Soil Profile Pit



T8 r1
T8 r3
T8 r2
T8 r4
(200 m off-site)