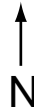


2005 KBS LTER Main Site

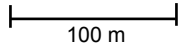


Treatment Key

- T1 Conventional **corn**/soybean/wheat conventional till
 - T2 No-till **corn**/soybean/wheat no till
 - T3 Reduced-input **corn**/soybean/wheat + clover
 - T4 Reduced-Input organic **corn**/soybean/wheat + clover
 - T5 Poplar trees
 - T6 Alfalfa
 - T7 Early Successional community
 - T8 Mid-Successional community - Never tilled
- r = replicate number

Microplot key

- Nitrogen fertilizer microplot
- Tilled microplot
- Leaf Litter Traps
- 2m x 1m Poplar trees, no fescue cover
- Plant competition microplots (3 density x 2 herbicide)
- Nematode disturbance study



Instrumentation key

- Minirhizotrons
- ★ Trace gas flux chambers
- θ TDR Rods
- ψ Low tension suction lysimeters
- ☼ Weather station & weighing lysimeter
- ⌂ Trace gas shed

Soil Profile Pit

